

Grade 9 Theory Test May 2015

1. Draw the following Key Signatures.

		<p style="font-size: small;">C# / Db</p>	
E Melodic Minor <u>G</u>	C# Harmonic Minor <u>E</u>	Bb Natural Minor <u>Db</u>	F# Harmonic Minor <u>A</u>
	<p style="font-size: small;">B / Cb</p>		
G Natural Minor <u>Bb</u>	Ab Harmonic Minor <u>Cb</u>	A# Natural Minor <u>C#</u>	G# Melodic Minor <u>B</u>

8/8
B

2. Complete the following scales. Pay attention to the directions for each scale!

Bb Harmonic Minor - Treble Clef, Key Signature, Ascending

↓
C# / Db

2/2 10

↑ Circle the Dominant / 1

A# Melodic Minor - Bass Clef, Accidentals, Ascending/Descending

↓
C#

0/2 10

The accidentals carry on to the descending part of the scale as there is only 1 bar

↑ Circle the Leading Tone / 1

Db Major - Alto Clef, Key Signature, Descending

↓
E / Fb

2/2 12

↑ Circle the Submediant / 1

C	D	E	F	G	A	B	C
Bb	C	Db	Eb	F	G	Ab	Bb

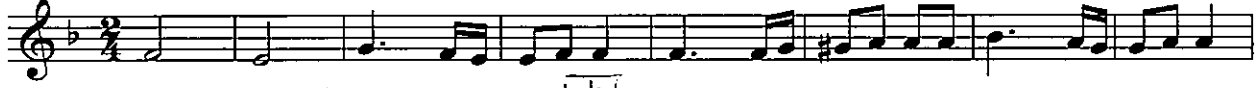
5. Continued...

Transpose the following music

This concert pitch piece of music **TRANSPOSE FOR** a French Horn.

Fmaj

K.S. , Bars Correct , Bonus . 0/3 25



C → F = perf. 4 F + 4 = B^b



This concert pitch piece of music **FOR** a Trombone.

bass

K.S. , Bars Correct , Bonus . 3/3 28



This concert pitch piece of music **FOR** a Tenor Sax.

K.S. , Bars Correct , Bonus . 0/3 28



down 1 tone + 1 octave F → Eb



6. Create the following 7th Chords using accidentals.

Five musical staves showing 7th chords in various keys and voicings. The first is a minor 7th chord in B-flat major. The second is a diminished 7th chord in B-flat major. The third is a dominant 7th chord in B major. The fourth is a major 7th chord in B major. The fifth is a minor 7th chord in B major.

Min 7th Dim 7th Dom 7th Maj 7th Min 7th

Five musical staves showing 7th chords in various keys and voicings. The first is a dominant 7th chord in B-flat major. The second is a minor 7th chord with a flat fifth in B-flat major. The third is a diminished 7th chord in B-flat major. The fourth is a minor 7th chord in B-flat major. The fifth is a major 7th chord in B-flat major.

Dom 7th Min 7th b5 Dim 7th Min 7th Maj 7th

Five musical staves showing 7th chords in various keys and voicings. The first is a diminished 7th chord in B-flat major. The second is a minor 7th chord in B-flat major. The third is a minor 7th chord in B-flat major. The fourth is a dominant 7th chord in B-flat major. The fifth is a major 7th chord in B-flat major.

Dim 7th Min 7th Min 7th Dom 7th Maj 7th

13/15 41

7. Under the staff and under each asterisk, write the **Roman numeral** for the chord that best fits the melody. **Label the key** at the start of your Roman numerals. **Label and identify the two cadences.** Do not use the same chord twice in row.

8 Chords (4), 2 Cadences (2)

A musical staff in 4/4 time with a key signature of two flats (B-flat major). The melody consists of eight measures, each marked with an asterisk. Handwritten Roman numerals are written below the staff: Bb: I, IV, ii, V, IV, ii, V, I. The first four measures are labeled as an "Imperfect cadence" and the last four as a "Perfect cadence". The score is marked with 5.5/6 and 46.5.

8. Add an appropriate melody that fits the given key and chords. Your melody must contain **3 neighbour tones (NT)** and **3 passing tones (PT)**. Label the final cadence. Circle and label the 6 NCTs (NT/PT). Label the Cadence.

Key Sig (1), Time Sig (1), Appropriate Melody CTs (1), Complete Bars (2), 6 NCTs (6), Cadence (1)

A musical staff in 4/4 time with a key signature of one sharp (G major). The chords are G: I, vi, IV, V. Handwritten labels "NT" and "PT" are placed above and below notes to identify Neighbour Tones and Passing Tones. The final cadence is labeled as an "Imperfect cadence". The score is marked with 11/12 and 57.5.