

70/100

Dec 17, 2014

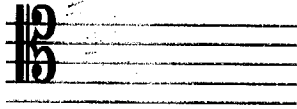
Total: /114

Name: Sophia Kee
9 Mus ① 2

5

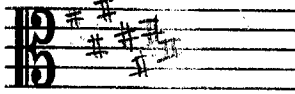
Grade 9 Theory Test Dec 2014

1. Draw the following Key Signatures.

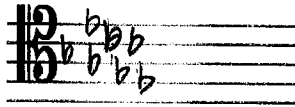


C G D A B E

C# Major

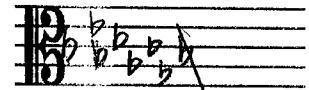


C# Major



B E A D G C F

Cb Major



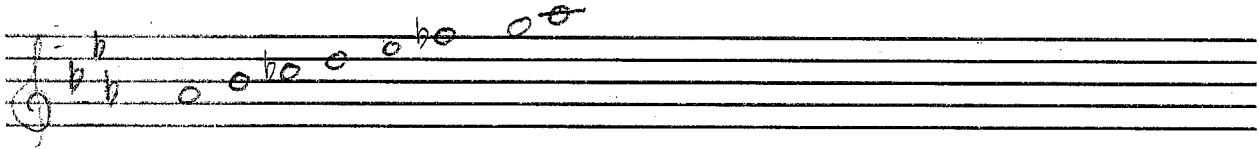
Cb Major

2/4

2. Complete the following scales.

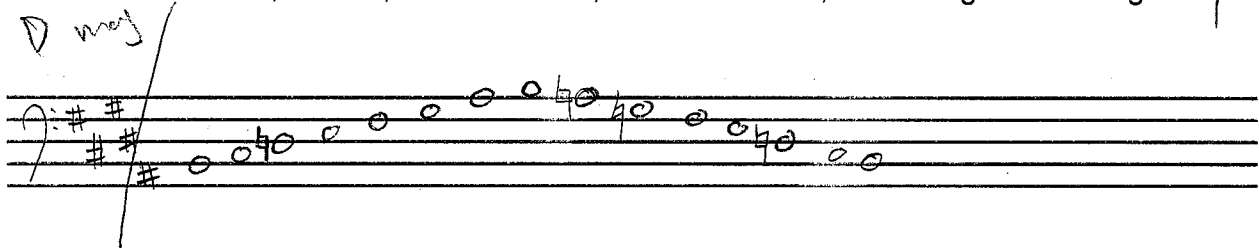
Ab Harmonic Minor Treble Clef

Clef , K.S. , Accidentals , Whole Notes , Ascending . 3/5



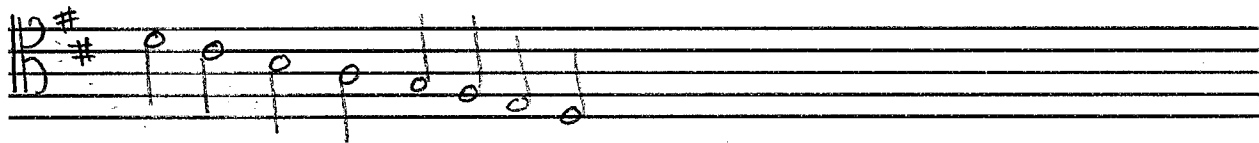
B Melodic Minor Bass Clef

Clef , K.S. , Accidentals , Whole Notes , Ascending/Descending . 4/5



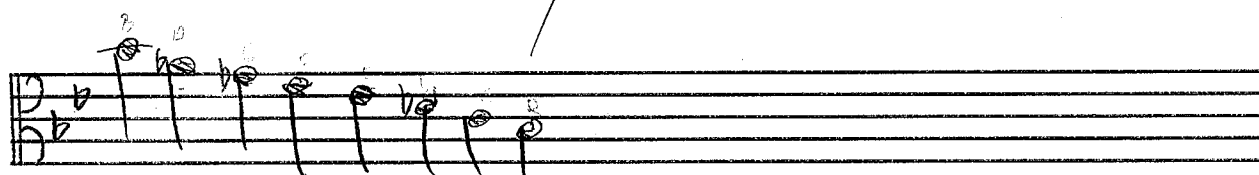
D Major Tenor Clef

Clef , K.S. , Half Notes , Stems , Descending . 4/5



Bb Melodic Minor Alto Clef

Clef , Accidentals , Quarter Notes , Stems , Descending . 3/5



Major 7th Minor 2nd Perfect 5th Augmented 4th Minor 7th

Minor 3rd Major 6th Minor 6th Major 2nd Major 3rd

10

4. Create the following Triads by adding accidentals.

C# min G dim F# Aug B Maj D dim

5 15

5. Create the following Triads using correct Inversions using accidentals.

D Maj 1st A min 2nd F# Maj Bb min 2nd D dim 1st

E aug 1st G dim 2nd C dim 2nd B Maj 1st Ab Maj 2nd

10 10

